

# DEPOCAM 17.0 Installation

DEPOCAM

# Table of Contents

1	Before you start the installation .....	2
2	Software Installation .....	3
3	Programing the license code on the dongle .....	6

## 1 Before you start the installation

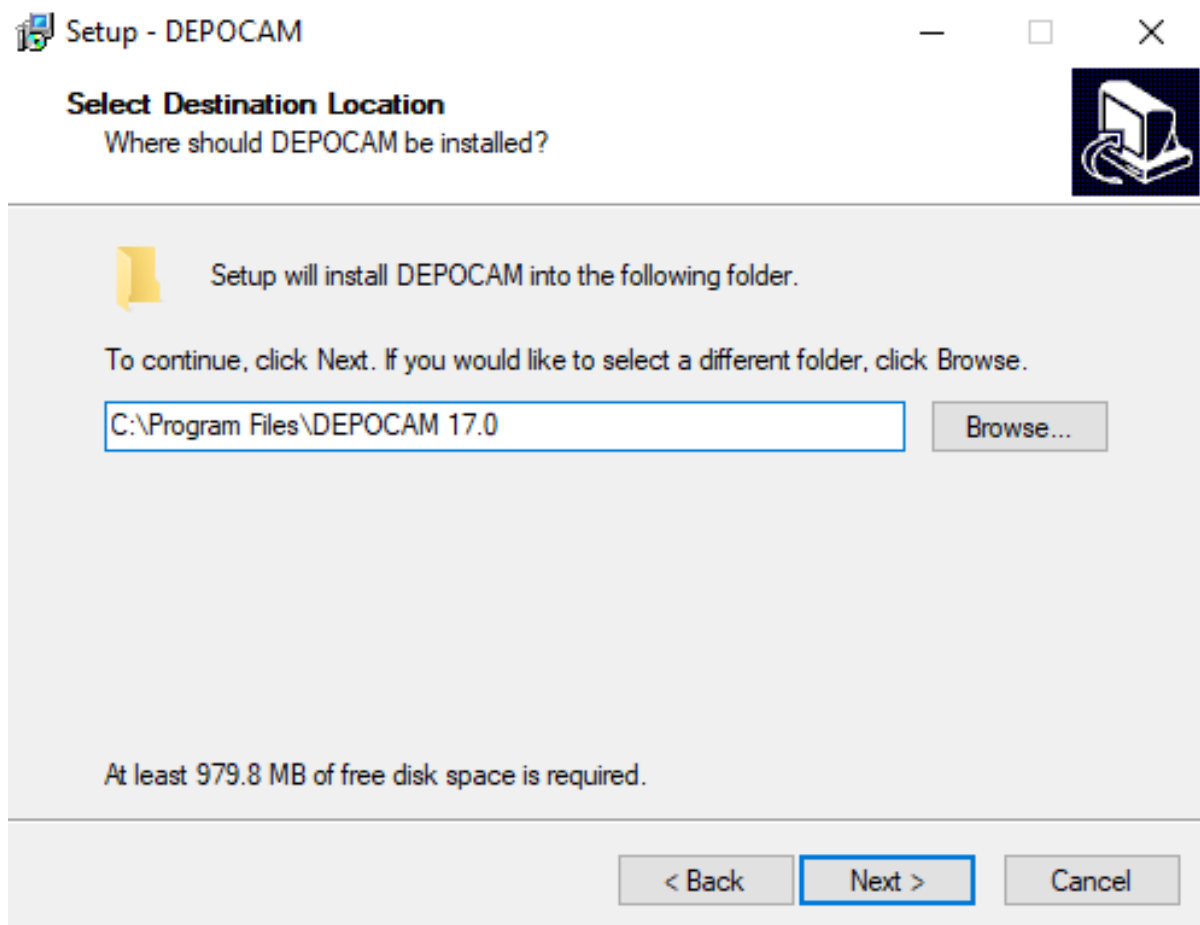
A dongle is required to license the software. You received this dongle from your supplier. The license code that is saved on the dongle unlocks the software and the options (**Catia V4, Catia V5, UG-NX, Granite, Parasolid, SolidWorks, 5-axis, Simulation, Inspect**).

The installation procedure is described in the section **Installation of DEPOCAM**.

## 2 Installation of DEPOCAM

The installation of the DEPOCAM software on a single-user computer is described below.

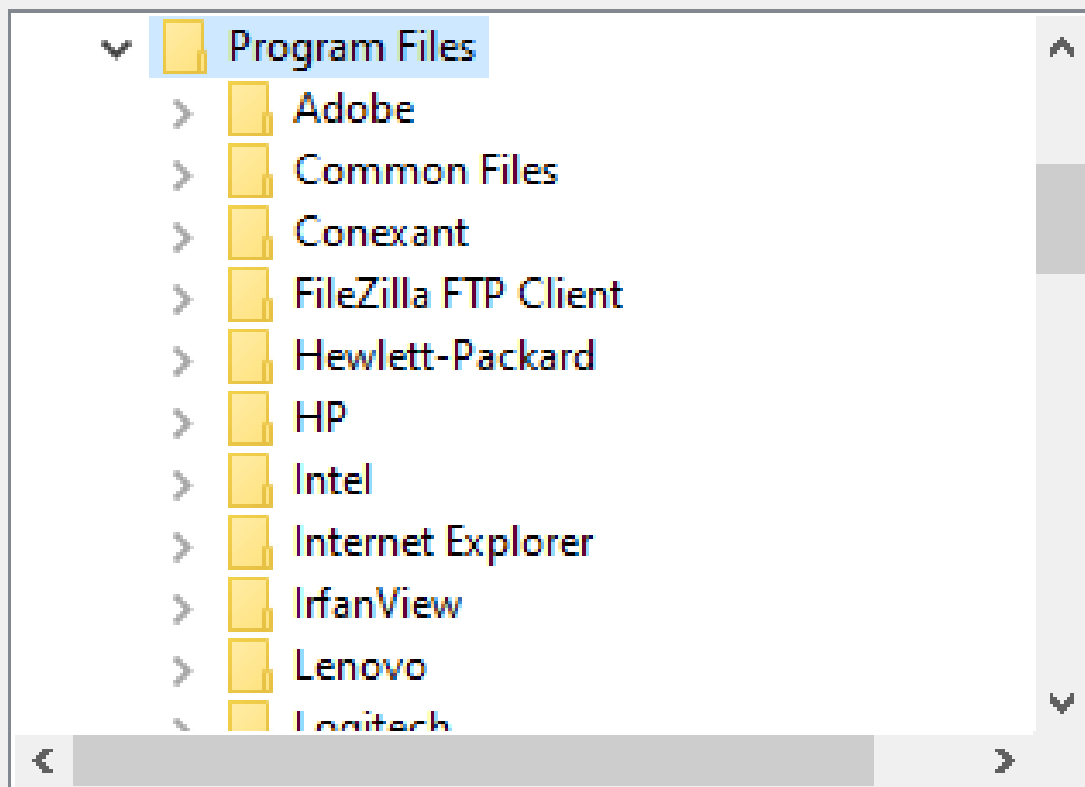
- Start the installation file **NCGCAM17.0.nnnmmmx64.exe**, which you downloaded from our homepage, or received from us via USB stick with a double click (nn-mmm are the respective release numbers of version 17.0).
- If you do not want to install DEPOCAM on drive C, you can select a different drive for the installation in the following dialog:



Click with the mouse on **Browse...** and select the desired drive and folder.

Select a folder in the list below, then click OK.

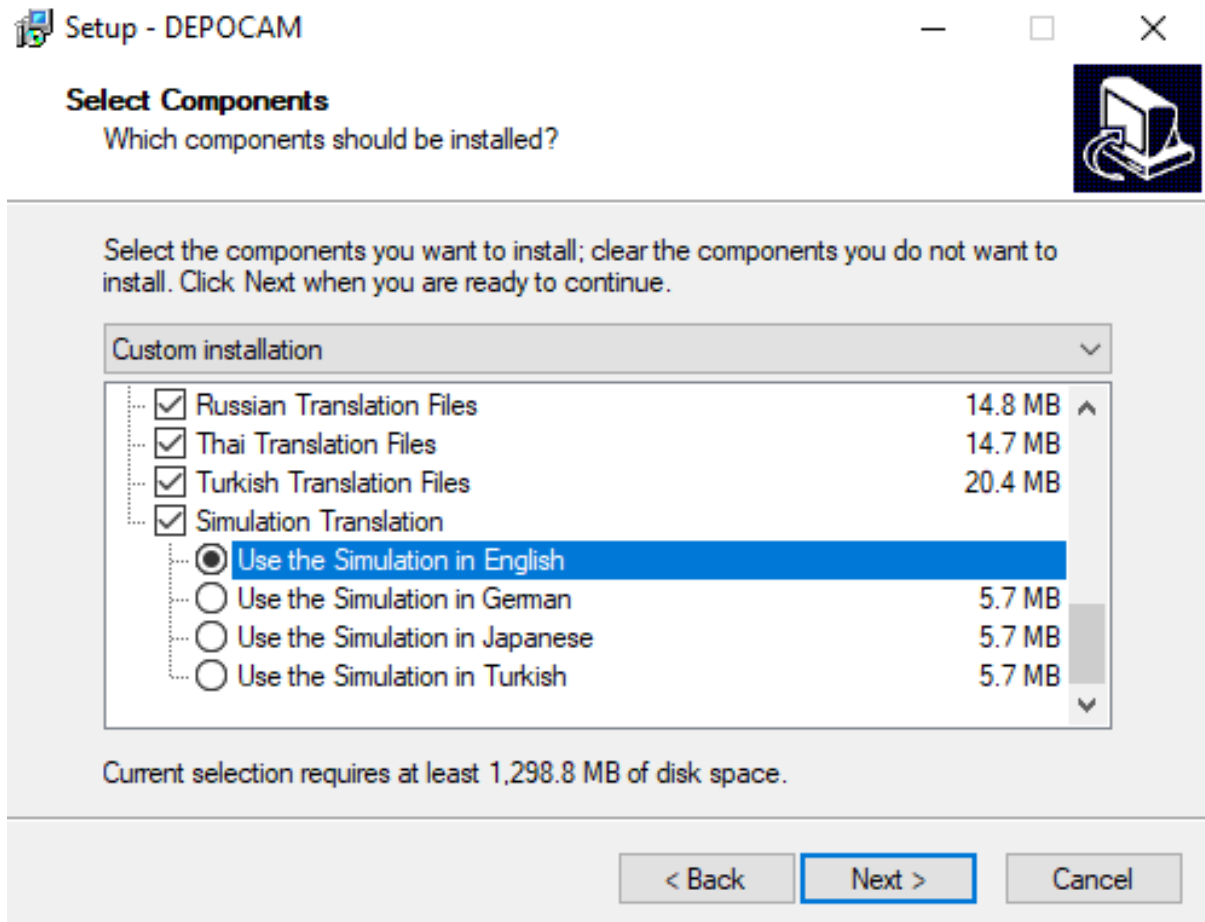
C:\Program Files\DEPOCAM 17.0



OK

Cancel

- Follow the installation instructions up to the dialog **Select Components**.



In any case, make sure that the **Licensing software** option is activated. Otherwise you cannot enter a license code for the dongle.

If you want to use the machine simulation with the English user interface, you must select the option **Use the Simulation in English**.

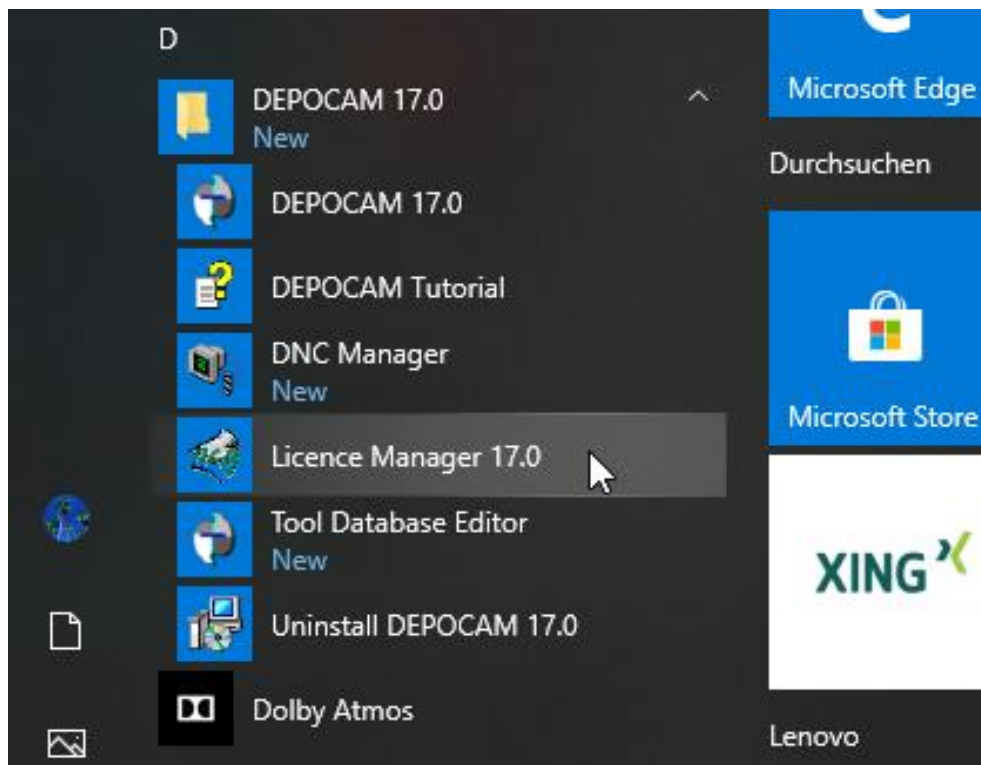
- Continue the installation and follow the further instructions.
- Restart your computer after the installation if you are prompted to do so.

### 3 Programming the license code on the dongle

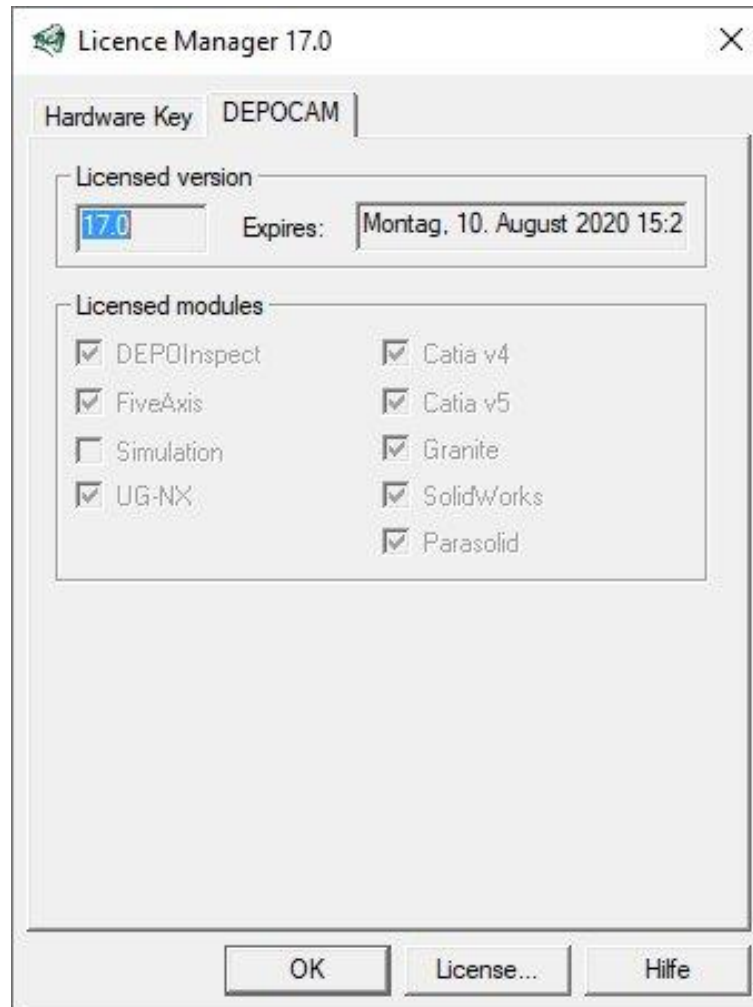
If you upgrade to a new DEPOCAM version, or purchase a new license, you will receive a new license code from us. This license code must be registered on your dongle.

The registration of the license code on your dongle is described below.

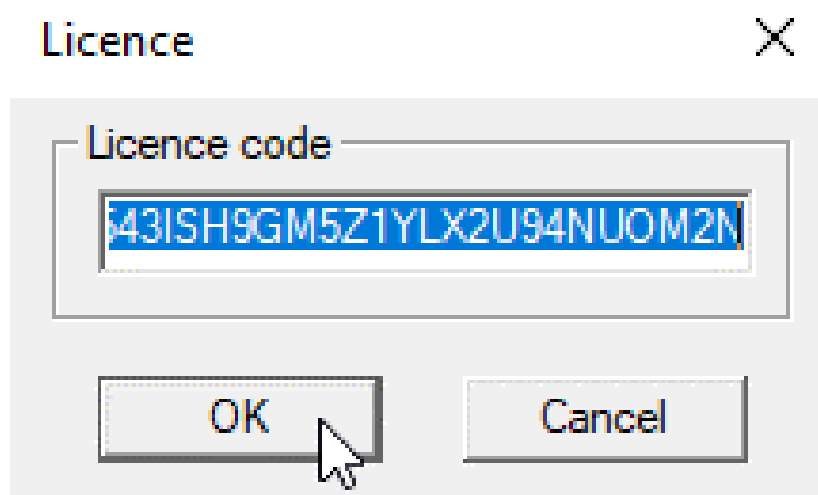
- Start the license manager which was installed with your DEPOCAM software. You can find it under **Start > Programs > DEPOCAM 17.0 > Licence Manager 17.0**.



- Click on the **License...** field with the mouse,



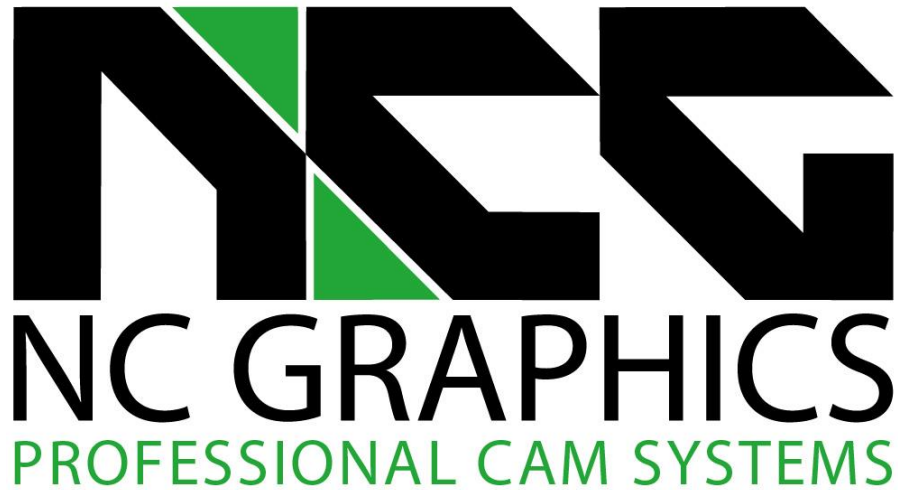
- and enter the licence code.



- After confirming with **OK**, the licence code is registered on the dongle. You can close the license manager and start the DEPOCAM software.

We hope that you could install DEPOCAM V17.0 quickly and easily with this description. Should you still have questions about the installation, don't hesitate to contact us.

Please contact:



Bgm.-Neumeyr-Str. 7 • D-85391 Allershausen • Fon: +49 8166 9982840 • E-Mail: info@ncgraphics.de

Your contacts for questions about DEPOCAM are:

Thomas Gehlhaus, Frank Schuberth und Dieter Trinkner

Please send inquiries via email to: [support@ncgraphics.de](mailto:support@ncgraphics.de)