

NCG CAM 19.0 Installation

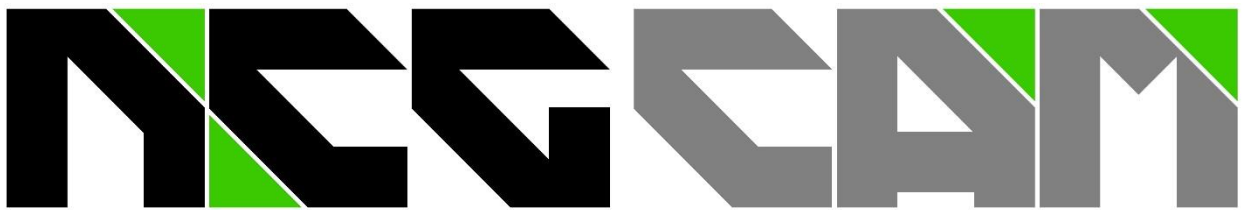


Table of Contents

1	Before you start the installation	2
1.1	Recommended backups	2
2	Installation of NCG CAM	3
3	Programing the license code on the dongle	6

1 Before you start the installation

A dongle is required to license the software. You received this dongle from your supplier. The license code that is saved on the dongle unlocks the software and the options (**Catia V4, Catia V5, UG-NX, Granite, Parasolid, SolidWorks, 5-axis, Simulation, Inspect**).

The installation procedure is described in the section **Installation of NCG CAM**.

1.1 Recommended backups

As new tool shapes have been added, the tool library is not compatible with previous versions. We therefore recommend that you create a new folder for the tool libraries before you start installing v19.

For example:

X:\xxxxxxx\Tool Libraries\v19

Copy the libraries from their previous folder to the v19 folder. After installing the software, add the libraries in v19 as usual under **Start > Libraries > Tool Database** and you can then work with them without changing your previous library.

We also recommend that you backup the recent cutter list. The corresponding file can be found in the Program data folder. By default it is:

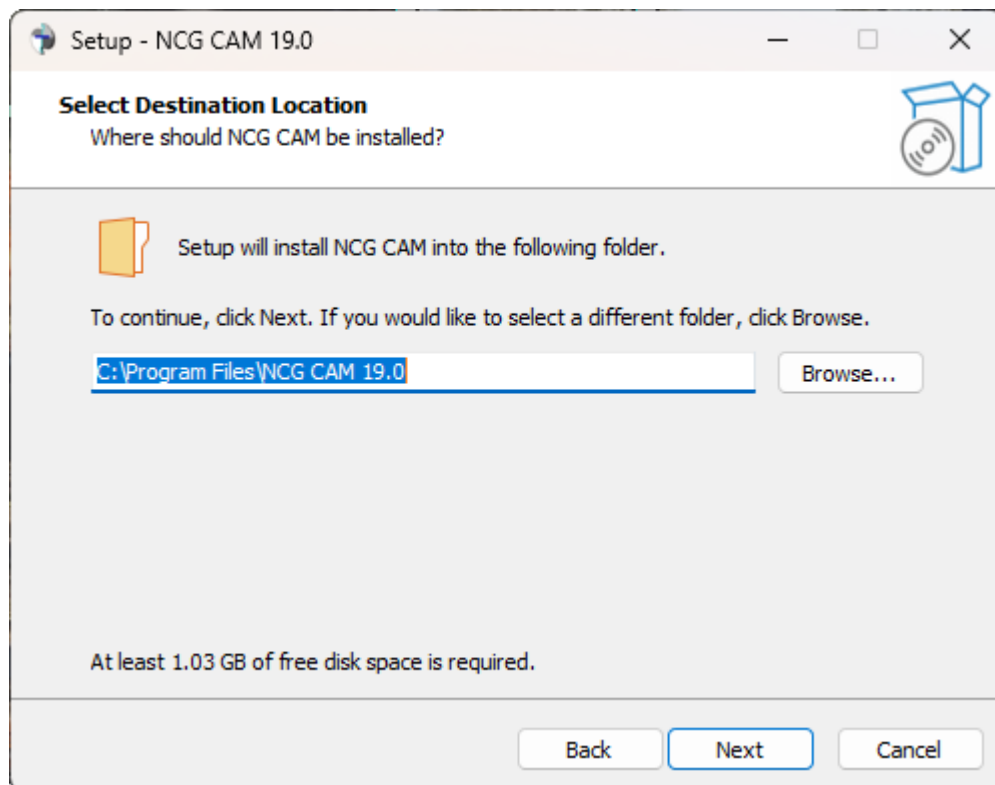
C:\ProgramData\NCGCAM Solutions\NCGCAM\MRU-xxxUSERxxx.tdb.

Copy the MRU.tdb file to a safe place. Working in parallel with the old and the new version will empty the list of the most recently used tools. If this happens, you can use your copy.

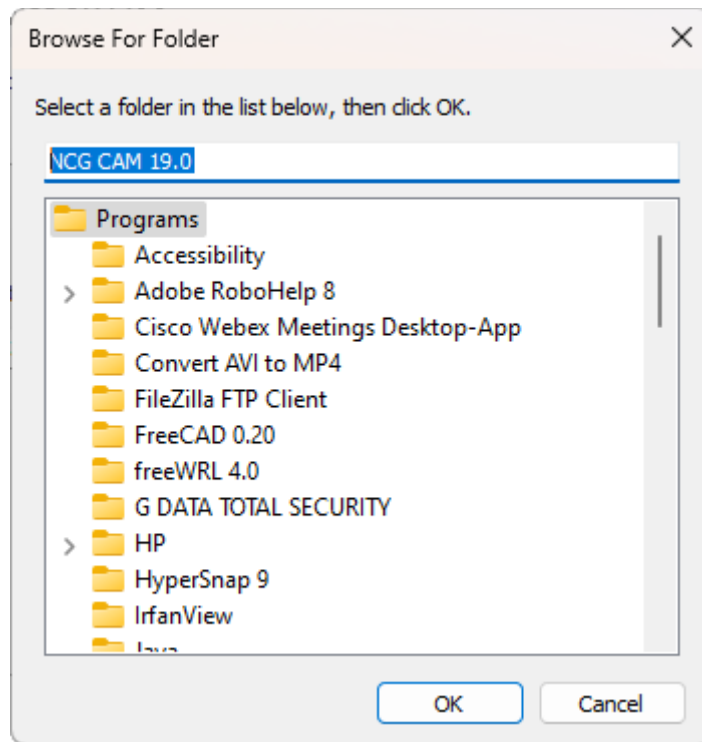
2 Installation of NCG CAM

The installation of the NCG CAM software on a single-user computer is described below.

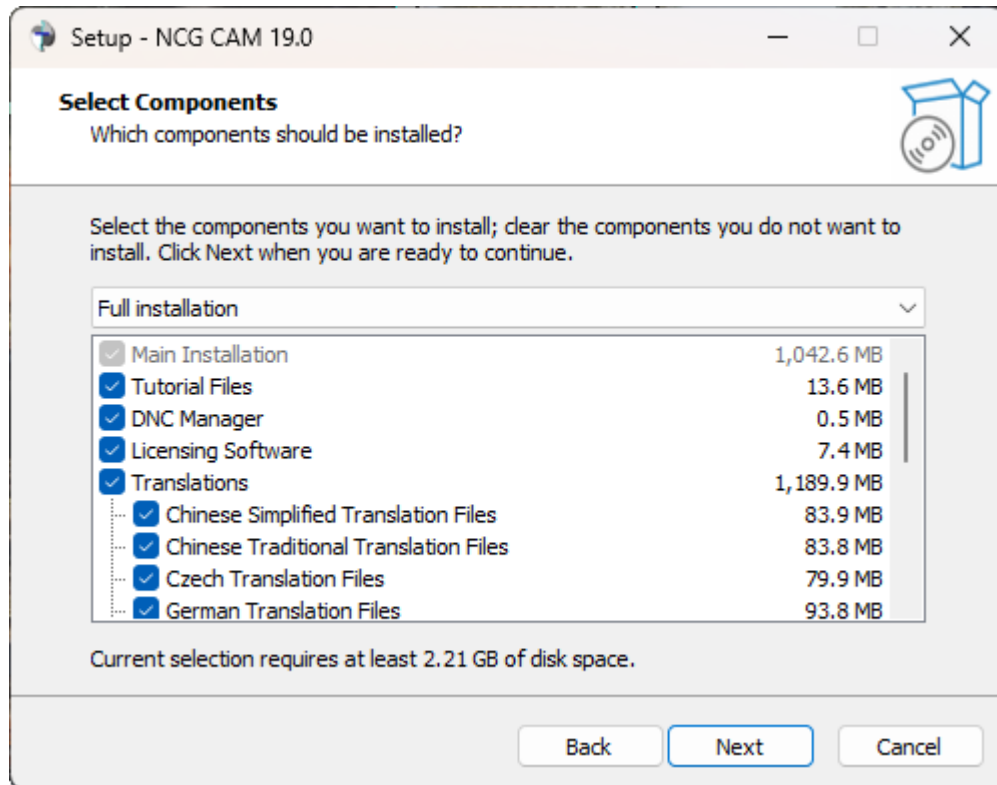
- Start the installation file **NCGCAM19.0.nmmmx64.exe**, which you downloaded from our homepage, or received from us via USB stick with a double click (nn-mmm are the respective release numbers of version 19.0).
- If you do not want to install NCG CAM on drive C, you can select a different drive for the installation in the following dialog:



Click with the mouse on **Browse...** and select the desired drive and folder.



- Follow the installation instructions up to the dialog **Select Components**.



In any case, make sure that the **Licensing software** option is activated. Otherwise you cannot enter a license code for the dongle.

During the installation, the machine simulation translation file will be automatically installed based on your PC's country settings. If your PC's country setting does not match either German, Japanese or Turkish, the machine simulation will be installed in English by default.

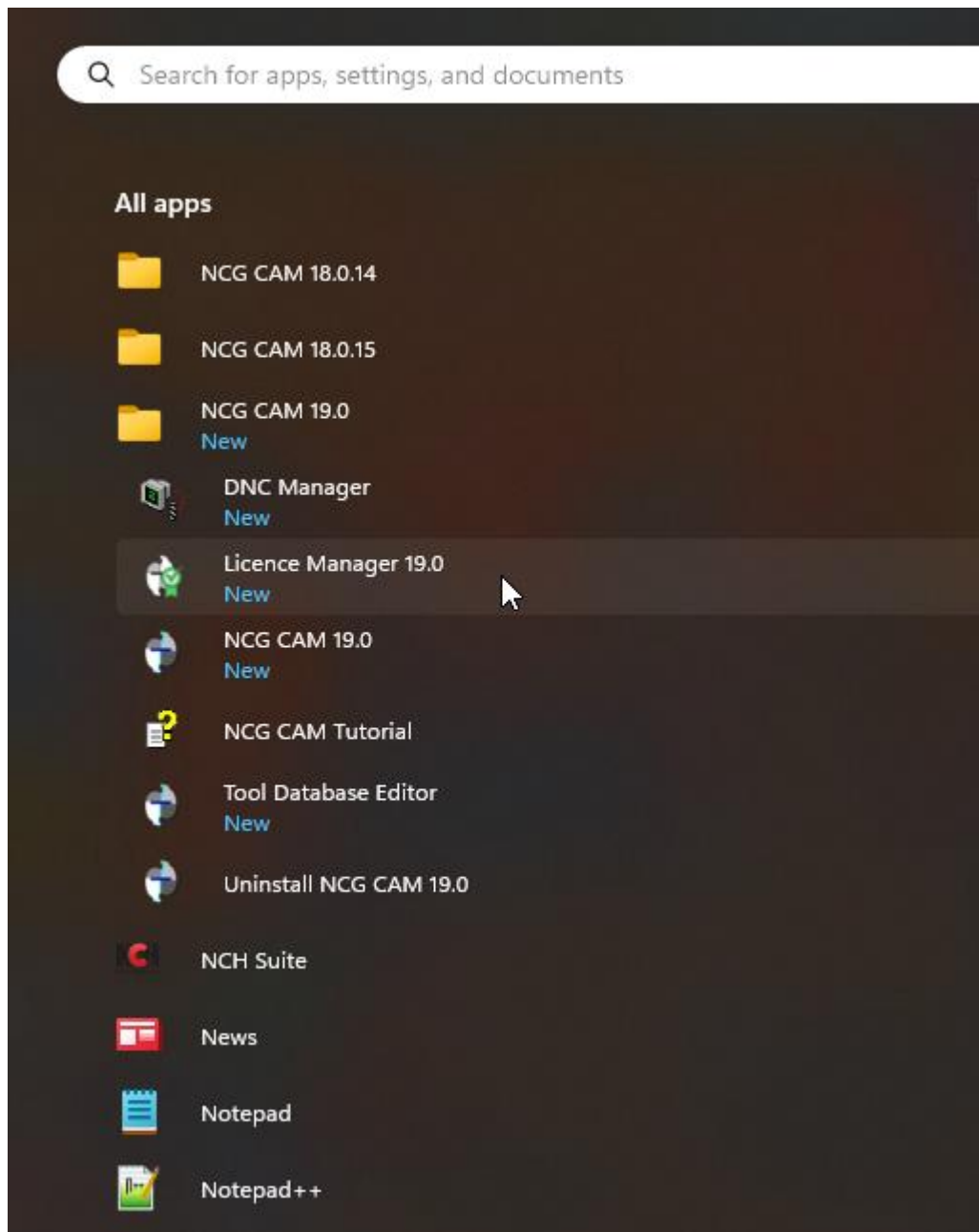
- Continue the installation and follow the further instructions.
- Restart your computer after the installation if you are prompted to do so.

3 Programming the license code on the dongle

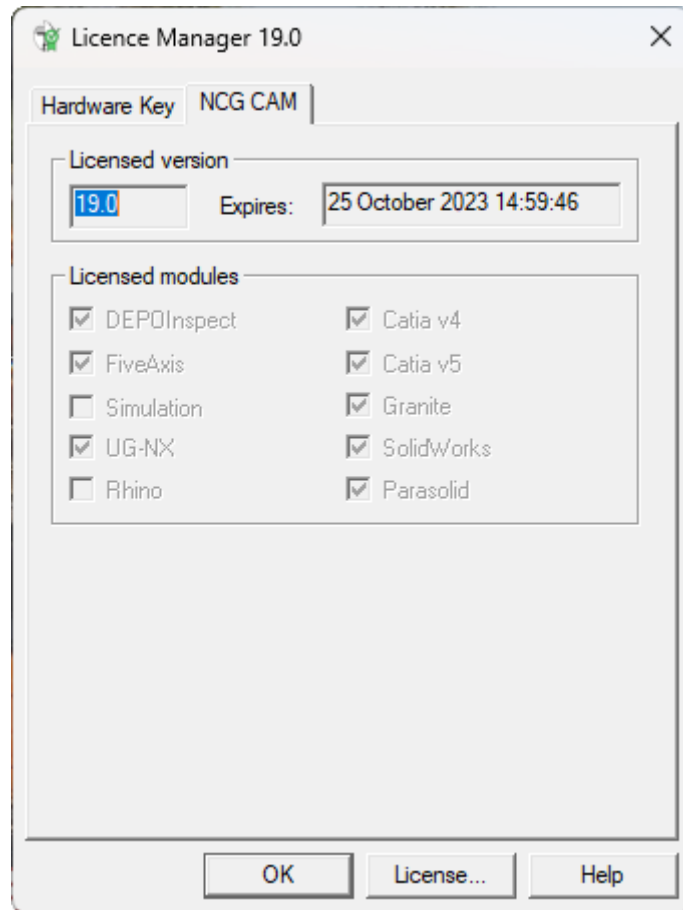
If you upgrade to a new NCG CAM version, or purchase a new license, you will receive a new license code from us. This license code must be registered on your dongle.

The registration of the license code on your dongle is described below.

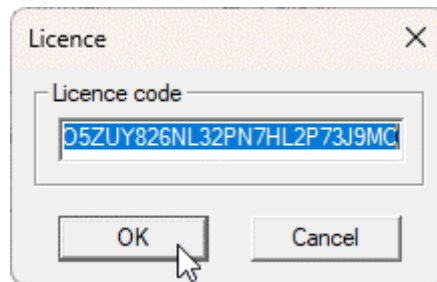
- Start the license manager which was installed with your NCG CAM software. You can find it under **Start > Programs > NCG CAM 19.0 > Licence Manager 19.0**.



- Click on the **License...** field with the mouse,



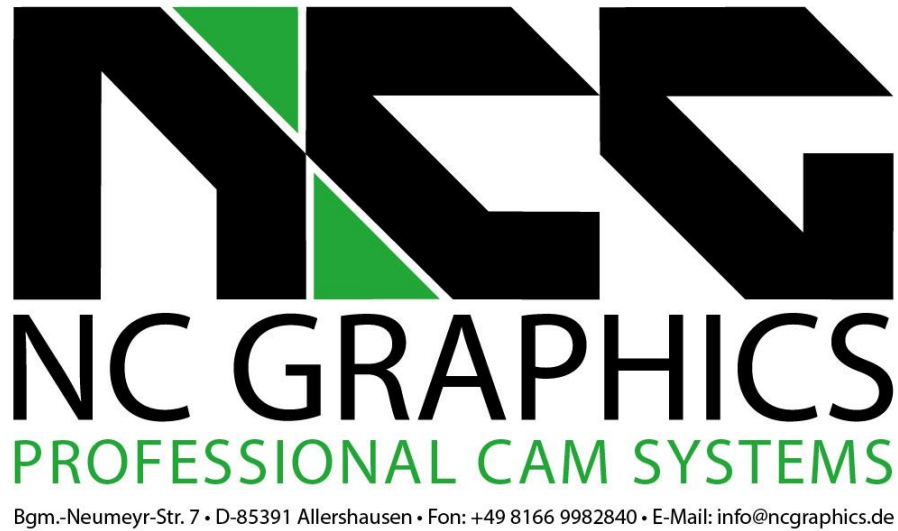
- and enter the licence code.



- After confirming with **OK**, the licence code is registered on the dongle. You can close the license manager and start the NCG CAM software.

We hope that you could install NCG CAM V19.0 quickly and easily with this description. Should you still have questions about the installation, don't hesitate to contact us.

Please contact:



Your contacts for questions about NCG CAM are:

Thomas Gehlhaus, Frank Schuberth and Dieter Trinkner

Please send inquiries via email to: support@ncgraphics.de